

CLEAN BETTER.

Changing the way things have always been done. Not only from the way we interact with the customer, but how our chemicals are made.

Large Vehicle and Equipment Cleaning



Alkaline (High pH) Products

- Alkaline (high pH) products are a good choice for either one-step touchless cleaning or the second step of two-step cleaning.
- **99% of vehicles can be cleaned with HEL100 Hellcat or THU100 Thunderbolt.**
- **Two-step touchless cleaning provides the best cleaning results. Choose one of Ver-tech Labs acid (low pH) products to pair with alkaline products.**
- Alkaline products target dirt, grime, oils, grease and organic soils.
- Use a “metal safe” product when cleaning vehicles and equipment with polished metal and /or soft metal components.
- Caustic products can damage polished and soft metals if not used correctly. The best use of caustic products is for cleaning work trucks with organic soils (e.g. garbage trucks).
- All alkaline products work best in soft, hot (110° F) water.
- Proper dilution of detergents is essential for touchless cleaning.

Products	Metal Safe	Reclaim Compatible	Green	Sizes
HEL100 Hellcat	Yes	Yes	Yes	5, 30, 55, 250
THU100 Thunderbolt	Yes	Yes	Yes	5, 15, 30, 55, 250
GRE100 Green Lightning	Yes	Yes	Yes	5, 55, 250
TON100 Tonka HD	No	Yes	Yes	5, 55
TSU100 Tsunami	No	No	Yes	5, 30, 55
EXT122 High Pressure Power Blast	Yes	No	Yes	50#, 300#
DOU100 Double Duty	Yes	Yes	Yes	5, 55
EXT372 Bug-Be-Gone	Yes	Yes	Yes	5, 15, 30, 55

Reclaim compatible products are optimized for use in water recycling systems.

HEL100 HELLCAT

- Most concentrated, metal safe product
- Use as a one-step touchless cleaner or second step of two-step touchless cleaning
- Great choice for use in automated truckwashes
- Works in hard water conditions (soft water will still give best results)
- Premium product

THU100 THUNDERBOLT

- Top selling high pH product for large vehicle, truck and equipment wash
- Versatile, excellent cleaner and degreaser
- Use as a one-step touchless cleaner or second step of two-step touchless cleaning
- Competitively priced

GRE100 GREEN LIGHTNING

- Economical truck wash soap best used with a brush
- Dilute 1:10 or stronger for touchless cleaning

TON100 TONKA HD

- Caustic
- Works best in soft water
- Low Foam product for reclaim use
- Good choice to use in two-step cleaning
- Great at removing organic soils

TSU100 TSUNAMI

- Excellent for cleaning old trailers
- Works best in soft water
- Good choice for cleaning garbage trucks

EXT122 HIGH PRESSURE POWER BLAST

- Superior highly concentrated powder for washing or degreasing
- Excellent cleaning and foaming properties
- Requires blend tank
- Use 1:10 or stronger for touchless cleaning
- Can be used for brush cleaning vehicles and equipment

DOU100 DOUBLE DUTY

- Light duty truck wash soap
- An excellent debugger, may actually dry on the surface
- Can be applied to hot vehicle surfaces without damaging paint or metal
- May require some brushing, not for touchless cleaning

EXT372 BUG BE GONE

- Spray on windshield, grill, mirrors and other surfaces with insect residue prior to washing with other VTL products
- Softens and removes bugs and light soils
- Will not damage vehicle surfaces if it dries on a hot vehicle

Acid (Low pH) Products



- Acid (low pH) products have two functions:
 - Removing inorganic soils, dirt metals and hard water scale
 - Cleaning and brightening glass and metals
- **Two-step cleaning provides the best cleaning results. Low pH products will not completely clean equipment and vehicles on their own. Use with a Ver-tech Labs high pH product.**
- Our low pH products target different types of soils and will work better in different geographic areas. Ask your chemical representative on the product best suited for your cleaning conditions.

Products	Metal Safe	Reclaim Compatible	Green	Sizes
EXT427 Sapper	Yes	Yes	Yes	5, 30
EXT430 Vision	Yes	Yes	Yes	5, 15, 30, 55
EXT470 Lightning	No	Yes	Yes	5, 30, 55
STR500 Stryker	No	Yes	Yes	5, 55
CIT110 Citric Clean contains Sulfuric acid	Yes	No	Yes	5, 55, 250
SUP110 Alomalite contains Hydrofluoric and Sulfuric acid	No	No	Yes	5, 55
SUP120 Alomalite Super contains Hydrofluoric and Sulfuric acid	No	No	Yes	5, 55

EXT427 SAPPER

- Step 1 of two-step cleaning
- Soft metal and polished metal safe
- Good choice for cleaning metal tankers
- Removes light oxidation

EXT430 VISION

- Step 1 of two-step cleaning
- Metal safe
- Removes lignin based soils that yellow trailers
- Recommend use with Hellcat or Thunderbolt

EXT470 LIGHTNING

- Step 1 of two-step cleaning
- Safer alternative for HF
- Great for restoring tankers
- Other than Alomalite, our best product for removing oxidation

STR500 STRYKER

- Step 1 of two-step cleaning
- Excellent alternative for HF
- Low foam product for reclaim systems
- Good on glass and chrome surfaces

CIT110 CITRIC CLEAN

- Step 1 of two-step cleaning
- Most versatile low pH truck wash product
- Metal safe on aluminum
- Good brightener
- Heavy duty cleaner
- Recommend use with Hellcat or Thunderbolt

SUP110 ALUMALITE

- Step 1 of two-step cleaning
- Contains HF and Sulfuric Acid
- Use to clean up aluminum rails
- Use on older trucks without polished aluminum

SUP120 ALUMALITE SUPER

- Step 1 of two-step cleaning
- Contains HF and Sulfuric Acid
- Recommend use with a strong alkaline product such as Hellcat, Thunderbolt, Golden Knight or Tonka HD
- Should only be used by professionals



Additional Truckwash Products

Products	Metal Safe	Green	Sizes
CLE100 Clean Safe degreaser and orange solvent based cleaner	Yes	Yes	5, 55, 250
ACE100 Ace 10 Plus degreaser	Yes	Yes	5, 55, 250
TOR110 Tornado Degreaser	Yes	Yes	5, 55, 4x1 Box
MOV100 Move Your Asphalt asphalt removing gel	Yes	Yes	5
CRE200 Crete Cutter	Yes	Yes	5, 55
EXT450 Salt Shield	Yes	Yes	5, 15, 30, 55

CLE100 Clean Safe

- Orange solvent based cleaner and degreaser
- Concentrated
- Heavy duty
- Metal safe
- Removes tar, asphalt, glues, gums

ACE100 Ace 10 Plus

- Degreaser and all purpose cleaning
- Heavy duty
- Metal safe
- Use to clean and degrease concrete floors, walls, vehicle surfaces, engines
- Can be applied with a pressure washer

TOR110 Tornado Degreaser

- Degreaser
- Concentrated
- Heavy Duty

MOV100 Move Your Asphalt

- Neutral pH gel
- Concentrated
- Heavy duty
- Metal safe
- Thick asphalt buildups can be removed through application of **MOV100 Move Your Asphalt**, dwell time of 12-15 minutes and a high pressure rinse. Longer dwell times, agitation and second applications all improve cleaning efficacy.

CRE200 Crete Cutter

- Dissolves hardened cement on vehicle and equipment surfaces
- Apply to cool surface, morning or evening application in the shade for best results
- Dwell time will vary, can be left on surface overnight
- Dissolves concrete into a rinsable form

EXT450 Salt Shield

- Low pH product
- Cleans and neutralizes salts (winter deicers, all year dust suppressants)
- Easily integrated into wash routine
- Metal safe
- Environmentally friendly
- Reclaim compatible



Neutral detergents are a good choice for friction (brush) cleaning of vehicles and as 2nd step in friction automatic truck washes. Neutral detergents will not work for touchless cleaning.

Products	Metal Safe	Reclaim Compatible	Green	Sizes
EXT350 Super Foam	Yes	No	No	5, 30, 55
EXT291 Jolt	Yes	Yes	Yes	5, 15, 30, 55

EXT350 Super Foam

- Neutral pH detergent suitable for friction cleaning
- High foam
- Concentrated
- Metal safe

EXT291 Jolt

- Our best foam detergent
- High foaming
- Neutral pH
- Metal Safe
- Reclaim compatible

How to clean a Semi-Trailer Truck

For best results, use a two-step touchless cleaning process.

TWO-STEP TOUCHLESS CLEANING:

Clean your semi-trailer from front to back and in small vertical sections (8-10 feet wide)

STEP 1: Apply a low pH (acid) detergent to the vehicle surface using a Foam Maxx foamer

- When applying the chemical, foam it on from the bottom of the vehicle to the top of the vehicle

STEP 2: Apply a high pH (alkaline) detergent directly on top of the low pH (acid) detergent, from the bottom to top of the vehicle

STEP 3: Allow for a short dwell time 30-45 seconds

- Do not allow the chemical to dry on the surface

STEP 4: Use warm water (90°F - 100°F) for your high pressure rinse and rinse the vehicle section from top to bottom

- Maintain your high pressure nozzle within 18 inches of the surface and a spray angle of 15° - 45°
- Repeat Steps 1-4 until your truck is clean
- The best products to use for two-step cleaning are **CIT110 Citric Clean** for the first step and **HEL100 Hellcat** or **THU100 Thunderbolt** for the second step

ONE-STEP TOUCHLESS CLEANING:

Clean your semi-trailer from front to back and in small vertical sections (8-10 feet wide)

STEP 1: Apply a high pH (alkaline) detergent to the vehicle surface using a Foam Maxx foamer

- When applying the chemical, foam it on from the bottom of the vehicle to the top of the vehicle

STEP 2: Allow for a short dwell time 45-60 seconds

- If you are washing a vehicle outdoors, ensure you do not allow any chemical to dry on the surface of your truck

STEP 3: Use warm water (90°F - 100°F) for your high pressure rinse and rinse the vehicle section from top to bottom

- Maintain your high pressure nozzle within 18 inches of the surface and a spray angle of 15° - 45°
- Repeat Steps 1-3 until your truck is clean
- The best high pH product to use for one-step cleaning is **HEL100 Hellcat** or **THU100 Thunderbolt**

Surface damage can occur if products are left on the surface beyond the recommended time frame.

Surface damage can occur if the vehicle's surface temperature is high – use caution if the vehicle has been in the sun prior to washing.



At Ver-tech Labs, our goal is to help our customers use the least amount of detergent to clean their trucks and heavy equipment effectively, at the lowest possible cost. The biggest impediment to cleaning touchlessly is poor dilution control of chemical products when using injection systems on common truckwashing equipment. Ver-tech Labs Foam Maxx foamers allow our customers to clean better and faster with controlled dilution rates and proper application of detergents.



Portable 20 Gallon Foamer With Kalrez Pump Kit

- Draws from pre-mixed solution
- Powered by compressed air
- Hinged back plate provides tool-free access to components
- Quick-change pump
- Natural color tank for easy visibility of product levels
- Hinged lid
- Front-facing drain
- In-line strainer to protect pump from debris
- Integrated hose wraps
- Anti-kink hose protection
- Discharge hose is 30 ft.
- Output distance is 25-30 feet
- Output volume is 20-45 gallons/minute
- 24" wand included



Portable 30 Gallon Foamer With Kalrez Pump Kit

- Draws from pre-mixed solution
- Powered by compressed air
- Hinged back plate provides tool-free access to components
- Quick-change pump
- Natural color tank for easy visibility of product levels
- Hinged lid
- Front-facing drain
- In-line strainer to protect pump from debris
- Integrated hose wraps
- Anti-kink hose protection
- Discharge hose is 30 ft.
- Output distance is 25-30 feet
- Output volume is 20-45 gallons/minute
- 24" wand included



Portable 50 Gallon Foamer With Kalrez Pump Kit

- Draws from pre-mixed solution
- Powered by compressed air
- Hinged back plate provides tool-free access to components
- Quick-change pump
- Natural color tank for easy visibility of product levels
- Hinged lid
- In-line strainer to protect pump from debris
- Anti-kink hose protection
- Discharge hose 50 ft.
- Output distance 25-30 ft.
- Output volume 20-45 gal/min
- 24" wand included

Included 24" wand



Foam Maxx Pre-Mix Foam Unit

- Draws from pre-mixed solution
- Powered by compressed air
- Stainless steel ball valve and wand
- Stainless steel fluid fittings
- Quick-change pump
- Suction line 8 ft.
- Discharge hose 50 ft.
- Output distance 25-30 ft.
- Output volume 20-45 gal/min



Foam Maxx Concentrate Foam Unit

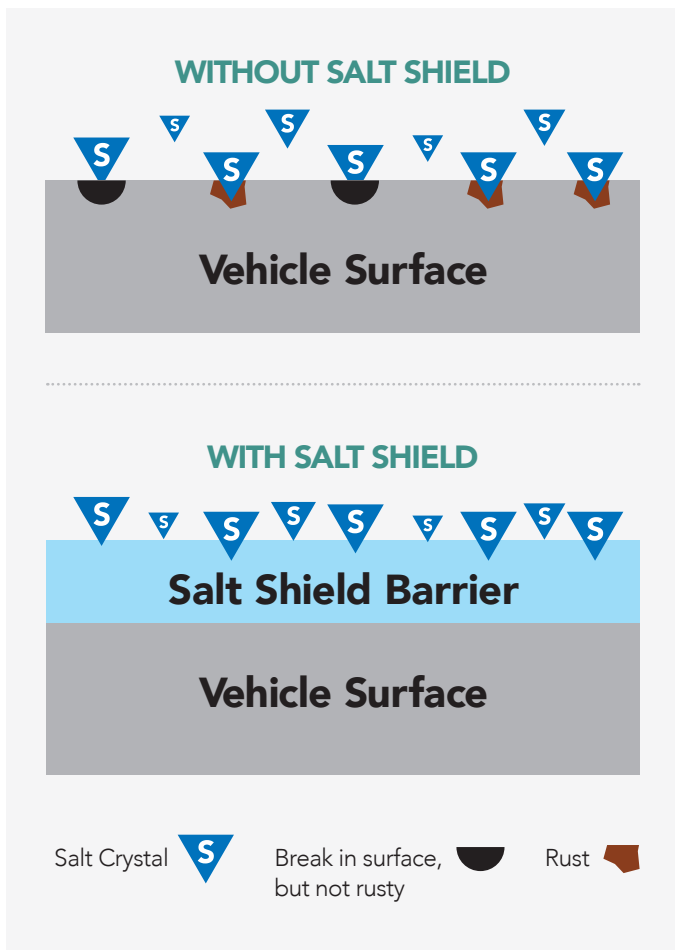
- Draws from concentrated product
- Dilutes at ratios of 14:1 to 320:1
- Powered by compressed air
- Stainless steel ball valve and wand
- Stainless steel fluid fittings
- Quick-change pump
- Suction line 8 ft.
- Discharge hose 50 ft.
- Output distance 25-30 ft.
- Output volume 20-45 gal/min



How does vehicle corrosion occur?

Vehicles driven on roads treated with deicers and dust suppressants, as well as coastal areas are all exposed to salts. These salts attract moisture from the air and are then dissolved. The dissolved salts increase water conductivity, making an electrolyte solution. Much in the same way an electrolyte in a battery facilitates the movement of electrons from one electrode to another, immersing any metal in an electrolyte solution speeds up the movement of electrons and the process of corrosion.

Using Salt Shield® will ensure that salts are thoroughly washed off surfaces. Regular use of Salt Shield creates a sacrificial barrier on the vehicle surface that mitigates the corrosive effect of salts.

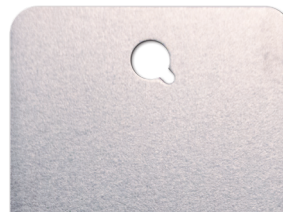


The Salt Shield sacrificial coating prevents salt crystals from reaching the vehicle surface.

Salt Shield® is a specially formulated low pH detergent that will clean and neutralize salts. Salt Shield chemically reacts with exposed metal surfaces, creating a protective barrier and enhancing resistance against salts. With regular use, Salt Shield can remove some preformed rust from the vehicle surface.

SALT SHIELD PROTECTION

ORIGINAL



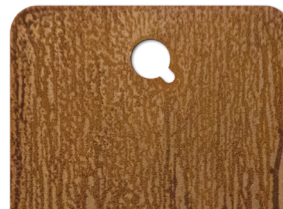
Untreated

Cold rolled steel panel, SAE designation 1010.



When Salt Shield® is applied, it chemically reacts with the metal to form a coating.

AFTER EXPOSURE TO SALT SOLUTION



Untreated

Rust forms on an untreated panel.



Salt Shield® coating acts as a protective barrier, enhancing resistance to rust formation.

